

SCATTERGUARD

DRAPE CATALOG

PROTECH
MEDICAL

2024



05

Scatterguard patient drapes are a **weightless and disposable** form of protection for operating personnel against scatter radiation.





SCATTERGUARD DRAPES

Protech is proud to offer a line of disposable products that protect doctors and technicians from the harmful effects of exposure to radiation while reducing the occurrence of biological contamination. ScatterGuard is comprised of disposable Drapes, Caps and Thyroid Collars.



**SCATTER
GUARD**

SCATTER RADIATION

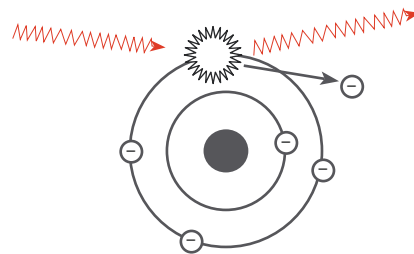
VERSUS DIRECT BEAM RADIATION

SCATTER RADIATION

These X-ray photons remove an outer shell electron from its orbit, thereby ionizing the atom. Low energy radiation interacts with body tissue then scatters in different directions.

LOW ENERGY - SCATTERED

Compton Effect



VERSUS

DIRECT BEAM RADIATION

These X-ray photons carry enough energy to eject an inner shell electron from its orbit. The High energy radiation penetrates and passes through the patient for imaging.

HIGH ENERGY - ABSORBED

Photoelectric Effect

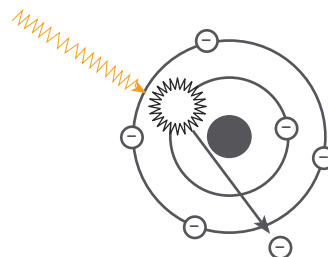


Image intensifiers have enabled surgeons to become technically more proficient and decrease the morbidity of the patient by minimizing area of operative field and decreasing operative time. Some over-use fluoroscopy, forgetting the principles of radiation protection, while others under-use it due to unfounded fears. In general, surgeons lack awareness about the radiation exposure they are getting and its effects on health.



THE EFFECTS OF SCATTER

The energy absorbed from ionizing radiation can cause cataracts, tumors, skin dermatitis, hair loss and germ cell mutations. In fact, "Cataracts occur with cumulative dose between 200 to 500 RADs." [2].

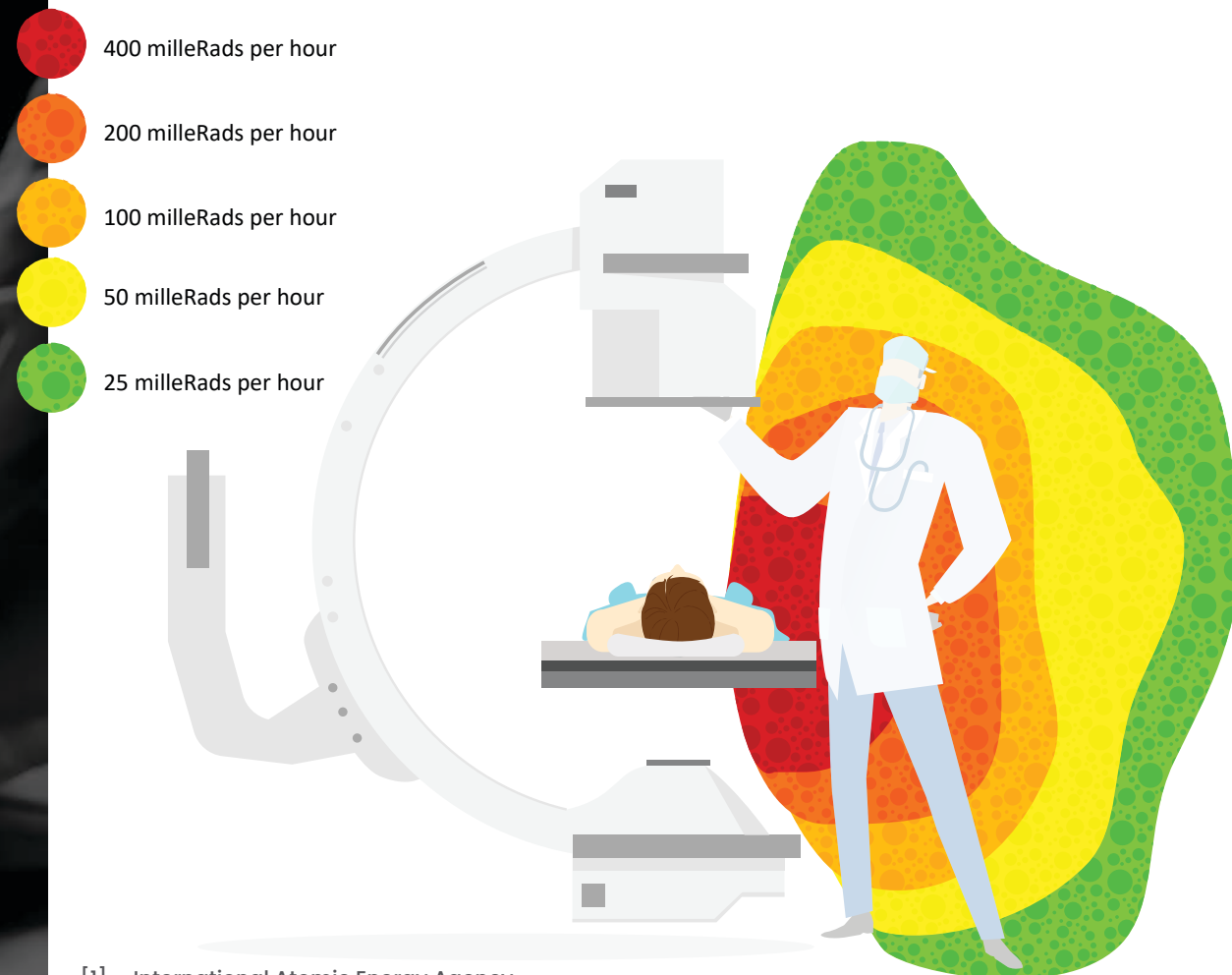
WHO IS AT RISK?

During procedures requiring fluoroscopy, direct beam radiation contacts a patient and "scatters" towards the surgeon and other personnel. This means surgeons and assistants are at maximum risk due to proximity to exposure area. "The scattered radiation from the patient comprises the main source of radiation dose to staff." [1]

According to the National & International Conferences on Radiation Protection (ICRP & NCRP), "Lens/Eye Dose should be limited to 15 RADs per year." Based on an average Lens/Eye Dose of 62 milleRads per hour and an average of 576 hours of Fluoroscopy per year some clinicians are receiving doses of 35.7 RADs per year. In a 30 year career this amounts to 1,071 RADs, if the operator is standing upright; far more if crouched or seated (about 5,184 RADs).

WEAR PROTECTION!

A SIR published study concluded "...lead glasses and scatter-draping drapes substantially reduced lens dose by factors of 9.5 and 12 respectively. Maximal eye draping was achieved by the use of both lead glasses and scatter-draping drapes." [3]



[1] – International Atomic Energy Agency

[2] – National & International Conferences on Radiation Protection

[3] – Drs. Dauer & Thorton, Memorial Sloan Kettering Medical Center, Society of Interventional Radiology 2009



**SCATTER
GUARD**
ActiV

PATIENT DRAPES

ScatterGuard Patient Drapes protect surgeons and technicians from the harmful effects of scatter radiation during surgical procedures *without any added weight.*

Our lead-free, latex-free drapes are uniquely designed to provide tailored coverage for a variety of procedures. Scatterguard drapes are made from our Prolite core material which is specially formulated to provide over 20% more protection at higher exposures than the competition. The drape exterior features our highly-absorbant ActiV material with a plastic, laminated inner layer. In addition, high quality 3M adhesive ensures secure positioning of the drape.

***Certified to ASTM 2547-18 and
IEC 61331-1:2014 Standards [CE 2895]**

ABSORBANCY

Fabric Type	Weight	Absorbancy Rate (sec/ml)	Absorbant Capacity
Leading Competitor 1	109 gsm	1.9 sec/ml	526%
Leading Competitor 2	130 gsm	2.5 sec/ml	600%
ActiV Absorbant	120 gsm	1.2 sec/ml	620%

PROTECTION PROPERTIES

Lead Equivalence	0.060mm	0.125mm	0.25mm*	0.375mm
Attenuation at 90kVp	50%	75%	90%	95%+



ECO-FRIENDLY



HIGH ABSORBANCY



STERILE



DISPOSABLE



LATEX FREE

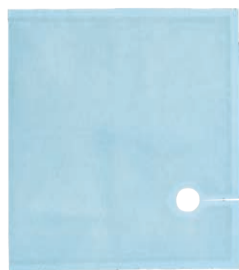


3M ADHESIVE

#	Model	Description	Fenestration	Dimensions	Procedures
1	SG-AD-060/125/250/375	Angiography Drape	2" Circle	14.5" x 16.5"	Angiography, Coronary Catheterization, UFE, Pelvic Surgery and TACE
2	SG-BD-125/250/375	Biliary Split Drape	5" Slit	14.5" x 16.5"	Transjugular intrahepatic portosystematic shunt (TIPS)
3	SG-DSD-125/250/375	Dialysis Drape	4.5" x 9" Rectangle	32" x 50"	Dialysis access and declotting, Fistulagram
4	SG-EPD-125/250/375	EP Left Subclavian Drape	3.25" x 2.25" Scoop	13.5" x 17.5"	Bi-ventricular pacemaker implants, Bi-ventricular pacing & ICS procedures

1

Angiography Drape



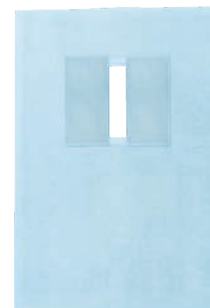
2

Biliary Split Drape



3

Dialysis Drape



4

EP Left Subclavian Drape



#	Model	Description	Fenestration	Dimensions	Procedures
5	SG-EPDC-LG-250	EP Drape - Large	5.75" x 3" Scoop	16" x 16"	Bi-ventricular pacemaker implants, Bi-ventricular pacing and ICS procedures
6	SG-EPDC-SM-250	EP Drape - Small	5.75" x 3" Scoop	11" x 16"	Bi-ventricular pacemaker implants, Bi-ventricular pacing and ICS procedures
7	SG-JUG-125/250/375	Jugular Access/ TIPS Drape	5" Slit	13.5" x 17.5"	Transjugular intrahepatic portosystematic shunt (TIPS)
8	SG-MPD-060/125/250/375	Multipurpose Drape	None	13.5 x" x 17.5"	Needle Biopsy or Puncture procedures

5

EP Drape - Large



6

EP Drape - Small



7

Jugular Access/TIPS Drape



8

Multipurpose Drape



#	Model	Description	Fenestration	Dimensions	Procedures
9	SG-MPDF-060/125/250/375	Multipurpose Drape w/ Fenestration	3.5" x 2" Rectangle	13.5" x 17.5"	Needle Biopsy or Puncture procedures
10	SG-PPD-125/250/375	Peripheral Drape	None	12" x 35"	Peripheral procedures w/ access through the femoral artery
11	SG-DCAP-060/125/250/500	Disposable Smart Cap	N/A	SM, MD, LG	Any procedure involving fluoroscopy
12	SG-DTHY-125/250/500	Disposable Thyroid Collars	N/A	Regular, Large	Any procedure involving fluoroscopy

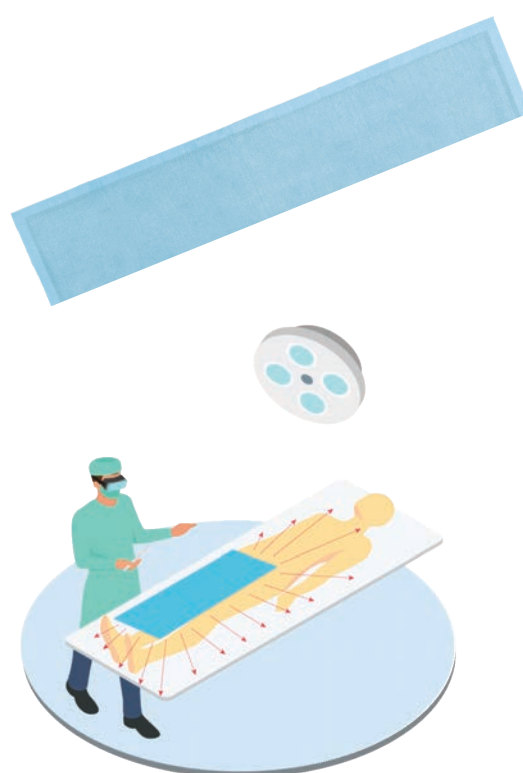
9

Multipurpose Drape with Fenestration



10

Peripheral Drape



11

Disposable Smart Cap



12

Disposable Thyroid Collar





CONTACT US

Telephone: 561.627.9769

Email (USA): sales@protechmed.com

Email (Intl.): global@protechmed.com

Email (Lat. Am.): latam@protechmed.com

www.protechmed.com

Protech Medical
1360 North Killian Dr., Unit 2
Lake Park, FL 33403